



# Connect a Non-School Computer to the Wireless on Windows 7

# This will describe how to connect a personal computer to the schools wireless network.

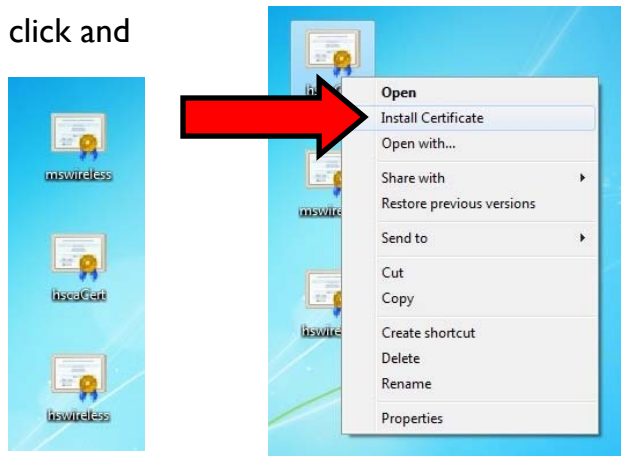
First step is to get a Personal Wireless Device Request form from one of the Technology Coordinators:

Curt.Vlaminck@k12.sd.us • Paul.Berndt@k12.sd.us • Chuck.Henson@k12.sd.us

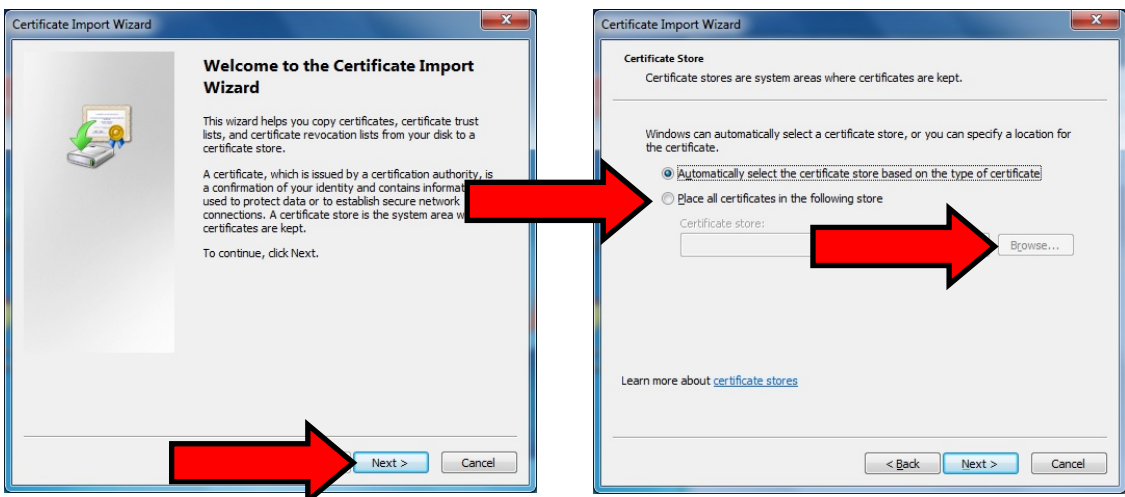
Download the security certificates.

You will need to do this next step for each security certificate:

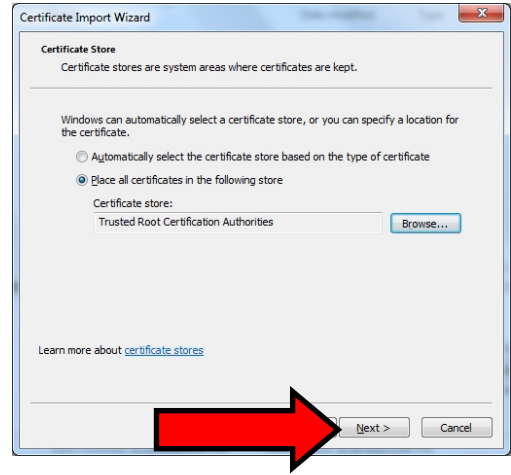
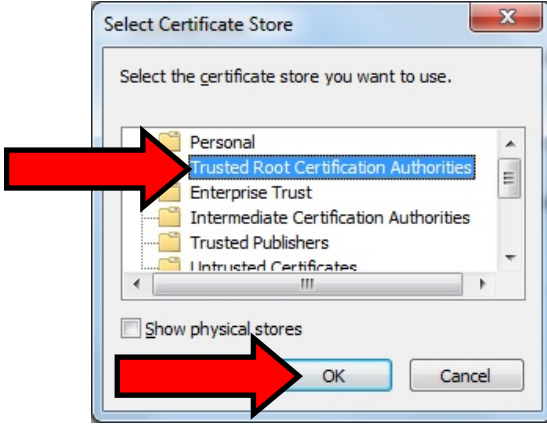
Right on one of the certificates click and then click “Install Certificate”.



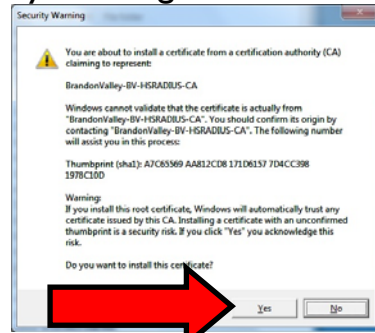
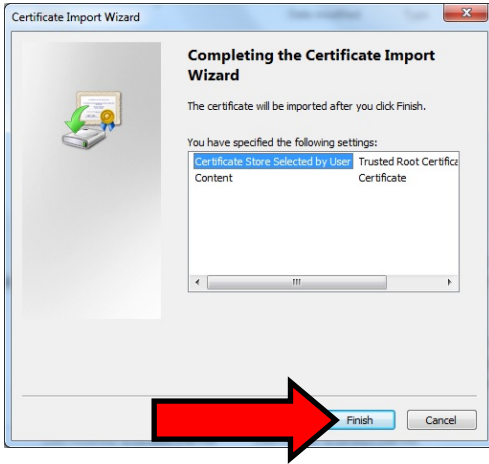
The Certificate Import Wizard will come up. Click “Next”. Then choose “Place all certificates in the following store” and then click “Browse”.



Select “Trusted Root Certification Authorities” from the list and then click “OK”. Then click “Next”.



Click on “Finish”. You will then see a security warning. Click “Yes”.

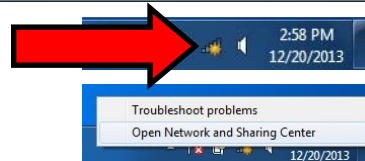


It should say that the import was successful.

Click “OK”.



In the lower right corner of the screen you should see the wireless icon with a gold star. Right click on this icon and choose “Open Network and Sharing Center”.



Click on “Set up a new connection or network”.

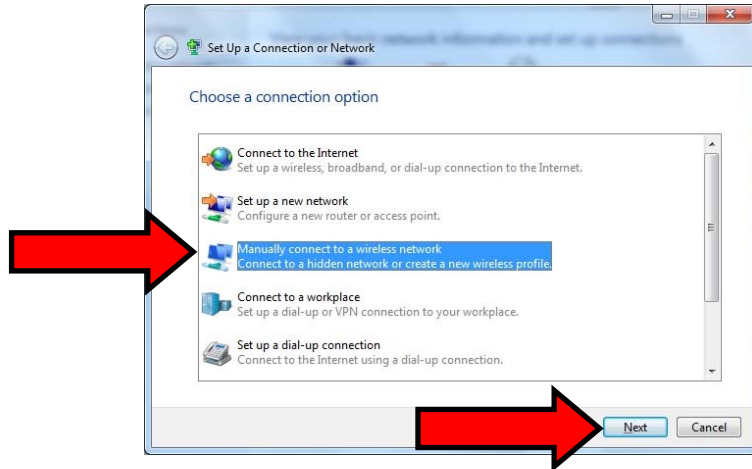
Change your networking settings



Set up a new connection or network

Set up a wireless, broadband, dial-up, ad hoc, or VPN connection; or set up a router or access point.

Click on “Manually connect to a wireless network” and then “Next”.



1. Here you will need to type the name of the Wireless Network for the school you are at. You would have recorded this earlier.

VSE-Wireless

BE-Wireless

RBE-Wireless

FAE-Wireless

BVMS-Wireless

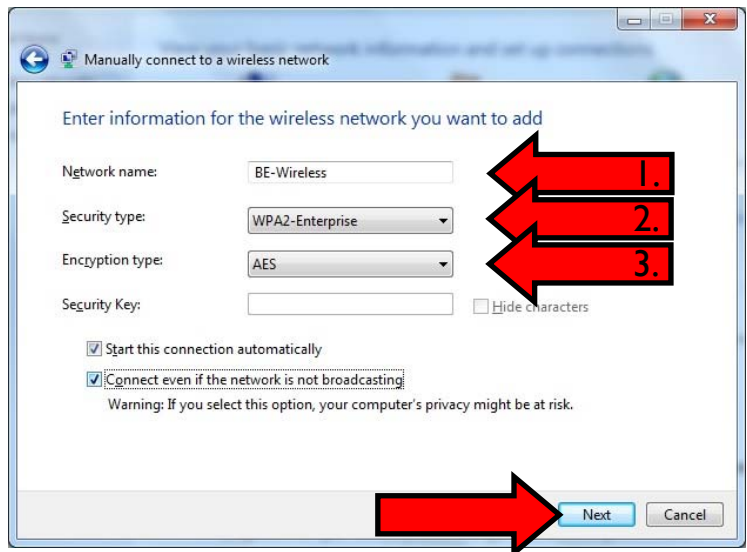
BrandonValley-Wireless

2. The Network Authentication is

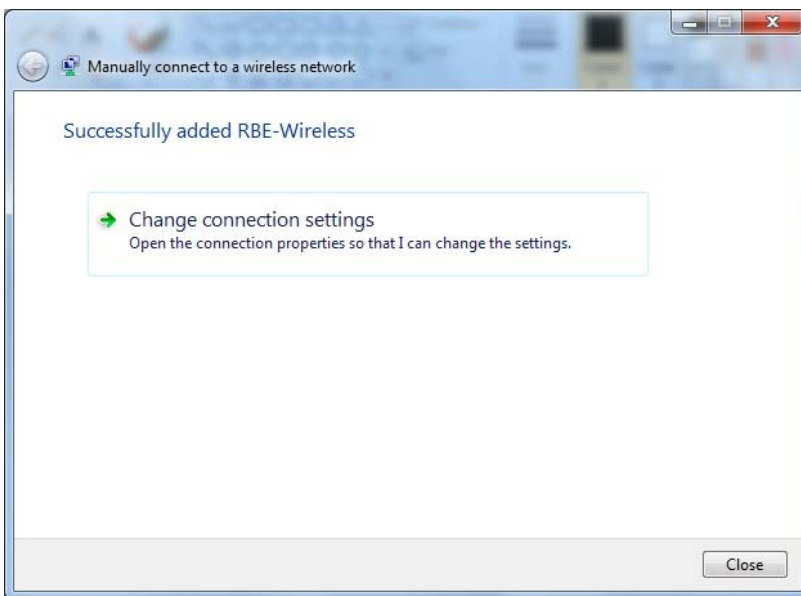
“WPA2”

3. Data Encryption is “AES”.

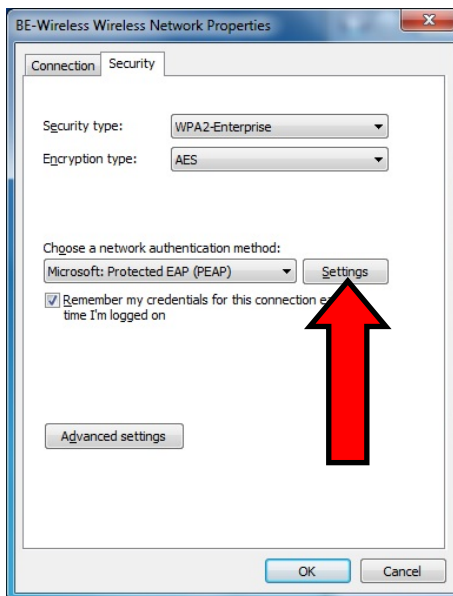
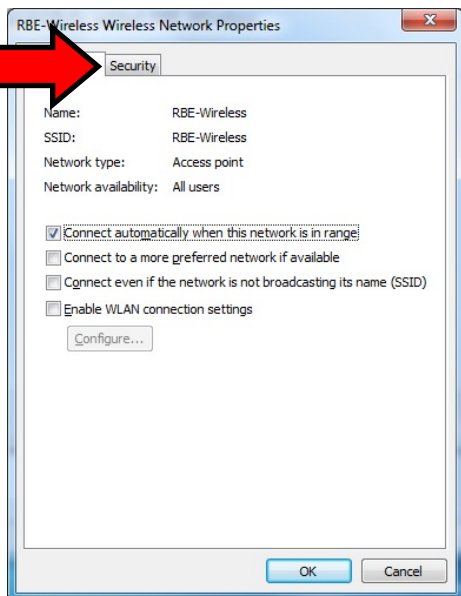
Then click “Next”.



On this screen click on “Change connection settings”.



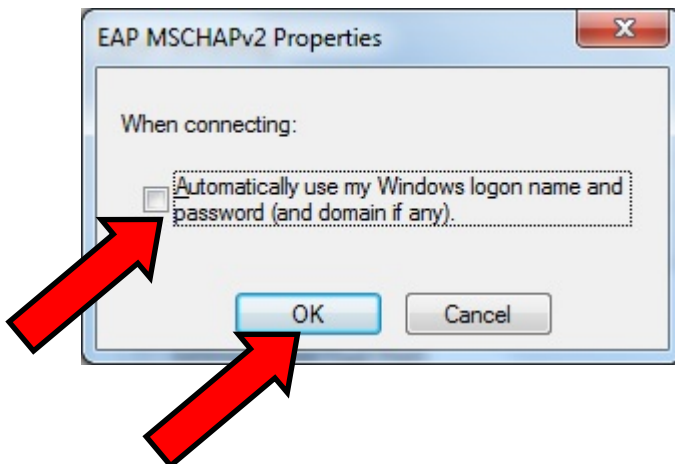
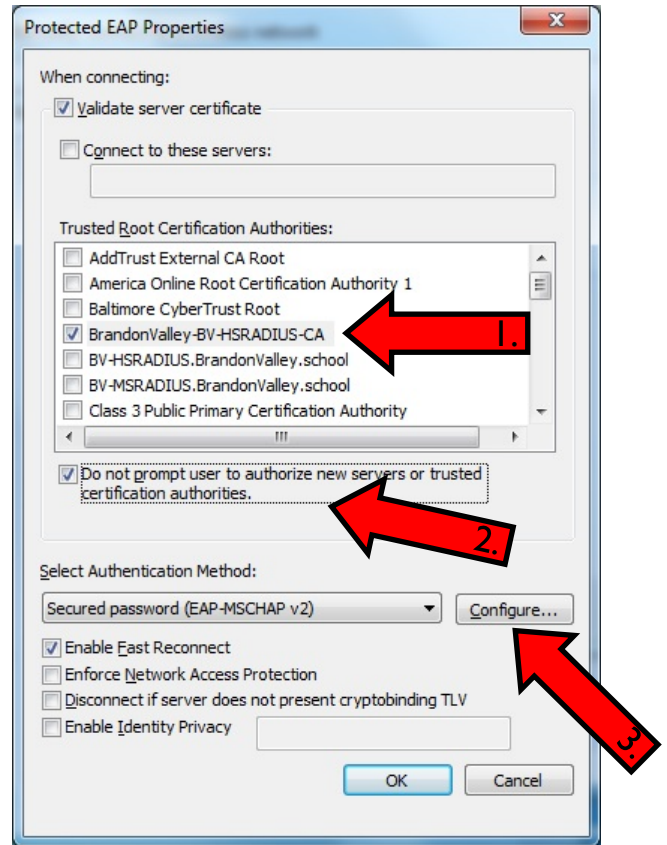
Click on the “Security” tab. Make sure the Network authentication method is “Microsoft: Protected EAP (PEAP)” then click on “Settings”.



1. In Protected EAP Properties under Trusted Root Certification Authorities find “BrandonValley-BE-HSRADIUS-CA” and make sure that box is checked.

2. Check the box that says “Do not prompt user to authorize new servers or trusted certification authorities.”

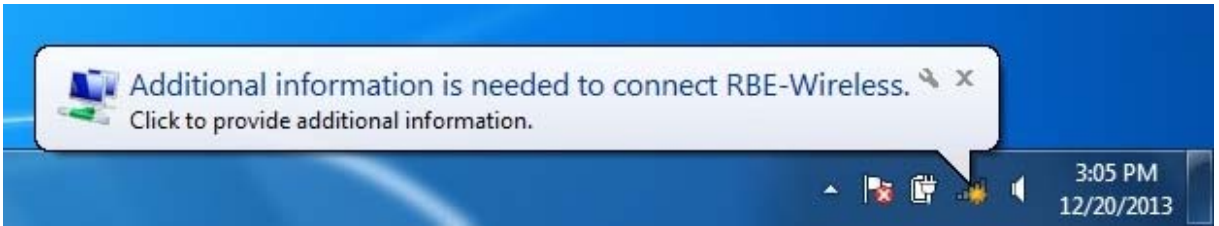
3. Then click “Configure”.



Make sure the “Automatically use my Windows logon name and password (and domain if any).” is NOT checked. And click “OK”.

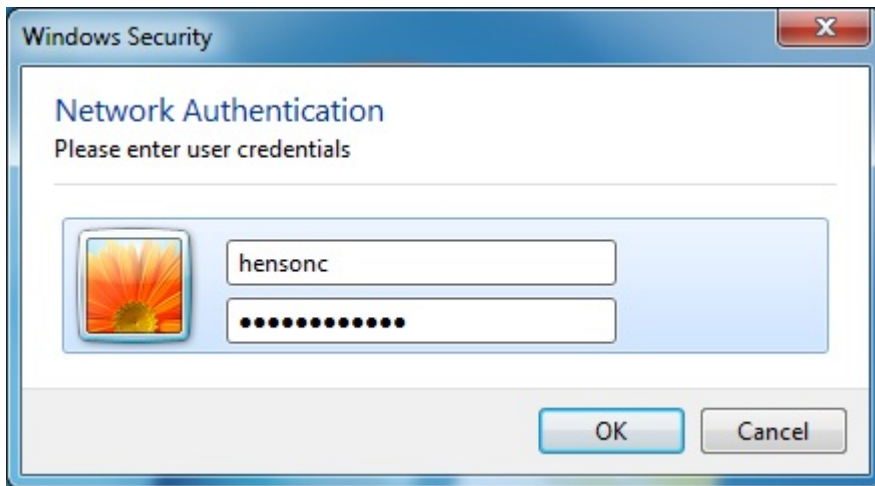
You will need to click “OK” until all the screens are gone.

You should see this popup click on it.



Enter your user name and password. The same one you use to log into the computer.

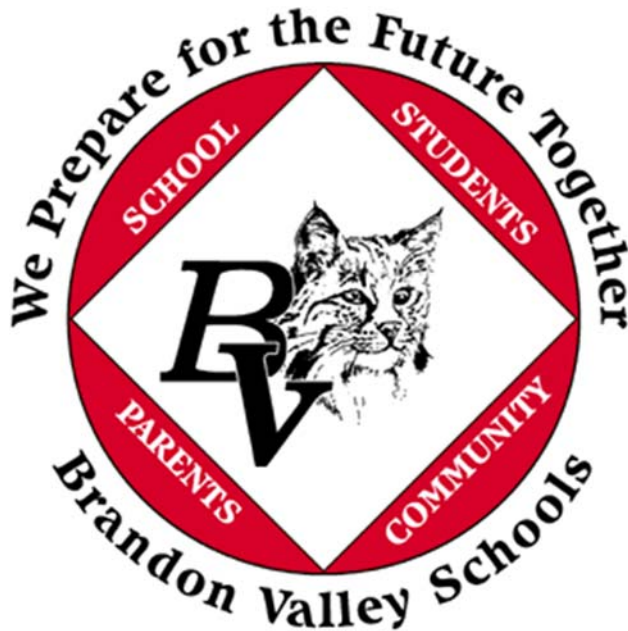
Click "OK".



You should now be connected.

If you have any questions please feel free to contact one of the Technology Coordinators.

~Chuck Henson  
chuck.henson@k12.sd.us - 605-359-7546



Created by Chuck Henson for the Brandon Valley School District. If you have any questions please contact [chuck.henson@k12.sd.us](mailto:chuck.henson@k12.sd.us).

All creative works are copyrighted, by international agreement, unless either they fall into the public domain or their copyright is explicitly disclaimed. Please make sure you have permission to make copies of any copyrighted material, that the material you are copying is your intellectual property, or that the property falls under public domain.