

Brandon Valley School District  
District Learning Plan  
April 13-17, 2020

Grade 4 Social Studies/Science



## Brandon Valley School District Distance Learning Plan

LESSON/UNIT: Energy/South Dakota History

SUBJECT/GRADE: Science/SS-4th

DATES: April 13-17



What do students need to do?  <a href="#">Link to BV instructional video for week of April 13 -17, 2020</a>	Monday: (4/13) - No School  Tuesday: (4/14) Social Studies - Complete the What's in a Name learning activity  Wednesday: (4/15) Science - Complete the Potential or Kinetic Energy learning activity  Thursday: (4/16) Social Studies - Complete the Hay or Straw learning activity  Friday: (4/17) Science - Complete the Energy worksheet
What do students need to bring back to school?	1. What's in a Name worksheet 2. Potential or Kinetic Energy worksheet
What standards do the lessons cover?	4-PS3-1 Use evidence to construct an explanation relating the speed of an object to the energy of that object. 4-PS3-2 Make observations to provide evidence for how energy can be transferred from place to place by sound, light, heat, and electric currents. 4.H.1 Students will analyze how major events are chronologically connected and evaluate their impact on one another 4.H.2 Students will analyze and evaluate the impact of people, events, ideas and symbols upon history using multiple sources. 4.H.3 Students will analyze and evaluate historical events from multiple perspectives.
What materials do students need? What extra resources can students use?	Need: <ul style="list-style-type: none"> <li>● What's in a Name worksheet</li> <li>● Potential or Kinetic energy worksheet</li> <li>● Hay or Straw worksheet</li> <li>● Energy worksheet</li> <li>● pencil</li> </ul> Extra: Potential or Kinetic Energy <a href="https://www.youtube.com/watch?v=lqV5L66EP2E">https://www.youtube.com/watch?v=lqV5L66EP2E</a> <a href="https://www.youtube.com/watch?v=quxEz2qxo9s">https://www.youtube.com/watch?v=quxEz2qxo9s</a> <a href="https://www.ducksters.com/science/physics/kinetic_energy.php">https://www.ducksters.com/science/physics/kinetic_energy.php</a>
What can students do if they finish early?	<ul style="list-style-type: none"> <li>● Practice states using online games-<a href="https://online.seterra.com/en/vgp/3003">https://online.seterra.com/en/vgp/3003</a></li> <li>● Label the states on a blank map</li> <li>● <a href="https://sd4history.sd.gov/index.htm">https://sd4history.sd.gov/index.htm</a>-research more facts about SD history</li> <li>● Do a kinetic or potential energy experiment (with parent/guardian permission/supervision)</li> <li>● Watch roller coaster rides online</li> </ul>

<p>Who can we contact if we have questions?</p>	<p><b>Brandon Elementary</b>  <b>Building Principal:</b>  Mr. Horst- <a href="mailto:merle.horst@k12.sd.us">merle.horst@k12.sd.us</a>  <b>Teachers:</b>  Mr. Giles- <a href="mailto:Scott.Giles@k12.sd.us">Scott.Giles@k12.sd.us</a>  Mr. Krivarchka- <a href="mailto:Joe.Krivarchka@k12.sd.us">Joe.Krivarchka@k12.sd.us</a>  Ms. Lane- <a href="mailto:Katee.Lane@k12.sd.us">Katee.Lane@k12.sd.us</a>  Mr. Rogers- <a href="mailto:Marshall.Rogers@k12.sd.us">Marshall.Rogers@k12.sd.us</a>  Mr. Schultz- <a href="mailto:Benjamin.Schultz@k12.sd.us">Benjamin.Schultz@k12.sd.us</a>  <b>Fred Assam Elementary</b>  <b>Building Principal:</b>  Ms. Foster- <a href="mailto:susan.foster@k12.sd.us">susan.foster@k12.sd.us</a>  <b>Teachers:</b>  Ms. Harte- <a href="mailto:Sarah.Harte@k12.sd.us">Sarah.Harte@k12.sd.us</a>  Ms. Scholten- <a href="mailto:Tara.Scholten@k12.sd.us">Tara.Scholten@k12.sd.us</a>  Mr. Steemken- <a href="mailto:Evan.Steemken@k12.sd.us">Evan.Steemken@k12.sd.us</a>  <b>Robert Bennis Elementary</b>  <b>Building Principal:</b>  Ms. Hofkamp- <a href="mailto:Kristin.Hofkamp@k12.sd.us">Kristin.Hofkamp@k12.sd.us</a>  <b>Teachers:</b>  Mr. Linneweber- <a href="mailto:Cody.Linneweber@k12.sd.us">Cody.Linneweber@k12.sd.us</a>  Ms. Pudwill- <a href="mailto:Andrea.Pudwill@k12.sd.us">Andrea.Pudwill@k12.sd.us</a>  Ms. Storm- <a href="mailto:Jena.Storm@k12.sd.us">Jena.Storm@k12.sd.us</a>  Mr. Sylliaasen- <a href="mailto:Tim.Sylliaasen@k12.sd.us">Tim.Sylliaasen@k12.sd.us</a>  <b>Valley Springs Elementary</b>  <b>Building Principal:</b>  Ms. Palmer- <a href="mailto:tanya.palmer@k12.sd.us">tanya.palmer@k12.sd.us</a>  <b>Teacher:</b>  Ms. Abens- <a href="mailto:lindsey.abens@k12.sd.us">lindsey.abens@k12.sd.us</a> long-term sub for <a href="mailto:laura.lueders@k12.sd.us">laura.lueders@k12.sd.us</a></p>
<p><b>Notes:</b></p>	

***Instructional materials are posted below (if applicable)***

*Brandon Valley School District*

# What's in a Name?

Name: \_\_\_\_\_

South Dakota has many beautiful state parks for us to enjoy. These parks are named after people and places from history and bodies of water. Use the clues to discover the park names. Use the list of state parks at the bottom of the page as a resource.

1. Opposite of east / Curve: \_\_\_\_\_
2. Ghost / Hill: \_\_\_\_\_
3. Green vegetable / Stream: \_\_\_\_\_
4. Body organ + car / Sandy ground: \_\_\_\_\_
5. Large rock / Surrounded land: \_\_\_\_\_
6. Beef / Stream: \_\_\_\_\_
7. Hissing animal / Stream: \_\_\_\_\_
8. Body of water / Unseen tree: \_\_\_\_\_
9. Fish eating bird / Body of water: \_\_\_\_\_
10. Not in the sun + Mound: \_\_\_\_\_
11. Flower blooming season / Stream: \_\_\_\_\_
12. Opposite of old + 2,000 pounds / Mounds: \_\_\_\_\_



**South Dakota State Parks**

Adams Homestead  
 Angostura  
 Bear Butte  
 Beaver Creek  
 Big Sioux  
 Big Stone Island  
 Burke Lake  
 Buryanek  
 Chief White Crane  
 Cow Creek  
 Custer  
 Farm Island  
 Fisher Grove  
 Fort Sisseton  
 Hartford Beach

Indian Creek  
 LaFramboise Island  
 Lake Alvin  
 Lake Cochrane  
 Lake Herman  
 Lake Hiddenwood  
 Lake Louise  
 Lake Poinsett  
 Lake Thompson  
 Lake Vermillion  
 Lewis and Clark  
 Little Moreau  
 Llewellyn Johns  
 George S. Mickelson  
 Mina Lake

Newton Hills  
 North Point  
 North Wheeler  
 Oakwood Lake  
 Oahe Downstream  
 Palisades  
 Pease Creek  
 Pelican Lake  
 Pickerel Lake  
 Pierson Ranch  
 Platte Creek  
 Randall Creek  
 Revheim Bay  
 Richmond Lake  
 Rocky Point

Roughlock Falls  
 Roy Lake  
 Sandy Shore  
 Shadehill  
 Sica Hollow  
 Snake Creek  
 Spirit Mound  
 Spring Creek  
 Springfield  
 Swan Creek  
 Union Grove  
 Walker's Point  
 West Bend  
 West Whitlock

Name: \_\_\_\_\_

# Potential or Kinetic?

**Potential Energy** is stored energy and is waiting to work.

**Kinetic Energy** is energy that is working.



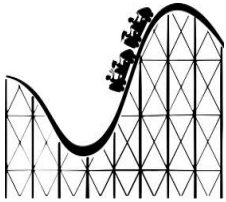
The apple in the tree is \_\_\_\_\_ energy.

The apple falling from the tree is \_\_\_\_\_ energy.



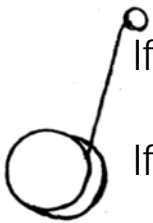
If the rubber band is still it is \_\_\_\_\_ energy.

If the rubber band is stretched it is \_\_\_\_\_ energy.



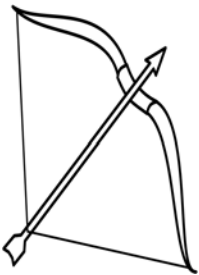
If the roller coaster is still, it is \_\_\_\_\_ energy.

If it is moving, it is \_\_\_\_\_ energy.



If the yoyo is still at the top, it is \_\_\_\_\_ energy.

If the yoyo is moving, it is \_\_\_\_\_ energy.



If the bow string is still it is \_\_\_\_\_ energy.

If the bow string is pulled it is \_\_\_\_\_ energy.

## Hay or Straw?

### SD Grasses, Wildflowers & Crops

#### Alfalfa

Alfalfa is a member of the pea family. Its leaves are compound, each consisting of three leaflets and clusters of small purple flowers. South Dakota farmers harvest it as hay.



1.  Grass  Wildflower  Crop
2.  Hay  Straw  Neither

## Hay or Straw?

### SD Grasses, Wildflowers & Crops

#### Buffalo Grass

Buffalo grass has short, curly leaves that look like a buffalo's hair. It grows in mats that rarely reach higher than five inches tall.



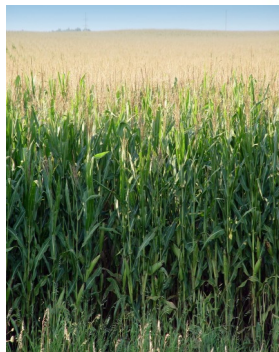
1.  Grass  Wildflower  Crop
2.  Hay  Straw  Neither

## Hay or Straw?

### SD Grasses, Wildflowers & Crops

#### Corn

This tall plant often reaches seven feet and bears kernels on large ears. It's generally grown east of the Missouri River.



1.  Grass  Wildflower  Crop
2.  Hay  Straw  Neither

## Hay or Straw?

### SD Grasses, Wildflowers & Crops

#### Big Bluestem

Big Bluestem, which varies in color from steel-blue to bronze in the summer, commonly grows six feet tall. The seed beads appear in July or August with three connected branches, forming a distinctive 'turkey foot' pattern.



1.  Grass  Wildflower  Crop
2.  Hay  Straw  Neither



## Hay or Straw? SD Grasses, Wildflowers & Crops

### Flaxseed

Flaxseeds contain linseed oil, an extract used in paints and varnishes. Flaxseeds are made into livestock meal. Flax plants have small blue or white flowers. South Dakota is the nation's third largest producer of flaxseed.



1.  Grass  Wildflower  Crop
2.  Hay  Straw  Neither

## Hay or Straw? SD Grasses, Wildflowers & Crops

### Green Needle Grass

Green needle grass turns from green to gray-green to pale yellow. They have slender stems and narrow, rolled leaves. Threadlike awns, about an inch long radiate out from seeds at the plant heads.

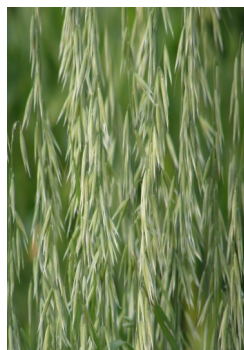


1.  Grass  Wildflower  Crop
2.  Hay  Straw  Neither

## Hay or Straw? SD Grasses, Wildflowers & Crops

### Oats

South Dakota is first in the nation in production of oats, an important horse feed. The long stalk is slender and topped by thin branches that spread out from all sides of the stem. The tan-to-white oat grain grows at the end of these spikelets.



1.  Grass  Wildflower  Crop
2.  Hay  Straw  Neither

## Hay or Straw? SD Grasses, Wildflowers & Crops

### Plains Prickly Pear

The prickly pear cactus has flat bristly stems. Its blossoms are large and waxy, usually yellow with a red center.



1.  Grass  Wildflower  Crop
2.  Hay  Straw  Neither

## Hay or Straw? SD Grasses, Wildflowers & Crops

### Rye

Rye, another cereal grain, is primarily used for livestock feed. The rye plant has long slender seed clusters with long bristles.

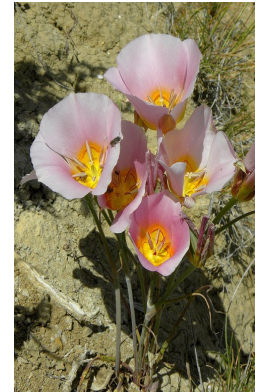


- |    |                          |       |                          |            |                          |         |
|----|--------------------------|-------|--------------------------|------------|--------------------------|---------|
| 1. | <input type="checkbox"/> | Grass | <input type="checkbox"/> | Wildflower | <input type="checkbox"/> | Crop    |
| 2. | <input type="checkbox"/> | Hay   | <input type="checkbox"/> | Straw      | <input type="checkbox"/> | Neither |

## Hay or Straw? SD Grasses, Wildflowers & Crops

### Sego Lily

The sego lily dots hillsides and dry, open areas. This perennial's flowers are creamy white with a touch of magenta in the center.



- |    |                          |       |                          |            |                          |       |
|----|--------------------------|-------|--------------------------|------------|--------------------------|-------|
| 1. | <input type="checkbox"/> | Grass | <input type="checkbox"/> | Wildflower | <input type="checkbox"/> | Crop  |
| 2. | <input type="checkbox"/> | Hay   | <input type="checkbox"/> | Straw      | <input type="checkbox"/> | Straw |

## Straw or Hay? SD Grasses, Wildflowers & Crops

### Small Soap weed (Yucca)

Plains Indians used the roots of this striking plant to make soap—the reason for the name— but it is more commonly called Yucca. A rigid stalk rises as high as four feet high from a rosette of sword-like leaves.



- |    |                          |       |                          |            |                          |         |
|----|--------------------------|-------|--------------------------|------------|--------------------------|---------|
| 1. | <input type="checkbox"/> | Grass | <input type="checkbox"/> | Wildflower | <input type="checkbox"/> | Crop    |
| 2. | <input type="checkbox"/> | Hay   | <input type="checkbox"/> | Straw      | <input type="checkbox"/> | Neither |

## Hay or Straw? SD Grasses, Wildflowers & Crops

### Soybeans

Soybeans are processed mostly for their oil. The left-over beans are used for livestock feed. Much of the plant is covered with fine brown or gray hair. Its flowers are white or purple.



- |    |                          |       |                          |            |                          |         |
|----|--------------------------|-------|--------------------------|------------|--------------------------|---------|
| 1. | <input type="checkbox"/> | Grass | <input type="checkbox"/> | Wildflower | <input type="checkbox"/> | Crop    |
| 2. | <input type="checkbox"/> | Hay   | <input type="checkbox"/> | Straw      | <input type="checkbox"/> | Neither |



## Hay or Straw?

### SD Grasses, Wildflowers & Crops

#### Sunflowers

South Dakota ranks first in the nation in the production of sunflower seeds.

Sunflowers grow on a rough stem and are easily recognized by their bright yellow petals and brown centers. They produce edible seeds that are rich in oil.



1.  Grass  Wildflower  Crop

2.  Hay  Straw  Neither

## Hay or Straw?

### SD Grasses, Wildflowers & Crops

#### Tufted Evening Primrose

The tufted evening primrose favors dry buttes and clay banks earning it the nickname Gumbo-lily. Its large white flowers turn pink and wilt in less than a day.



1.  Grass  Wildflower  Crop

2.  Hay  Straw  Neither

## Hay or Straw?

### SD Grasses, Wildflowers & Crops

#### Switchgrass

Switchgrass has a loose, many-seeded head called a panicle. Its blue color changes to a rusty tan in the fall. It grows two to five feet tall.



1.  Grass  Wildflower  Crop

2.  Hay  Straw  Neither

## Hay or Straw?

### SD Grasses, Wildflowers & Crops

#### Western Wheatgrass

Western wheatgrass, the state grass, has a blue, waxy appearance and is common throughout South Dakota. It has stiff, spiked-flower clusters at the top of a leafy stem.



1.  Grass  Wildflower  Crop

2.  Hay  Straw  Neither

## Hay or Straw?

### SD Grasses, Wildflowers & Crops

#### Wheat

Wheat is a major cash crop for South Dakota farmers who grow the spring, winter, and durum varieties. When young, it resembles grass; as it matures, its clusters of bearded kernels turn golden brown.



- |    |                          |       |                          |            |                          |         |
|----|--------------------------|-------|--------------------------|------------|--------------------------|---------|
| 1. | <input type="checkbox"/> | Grass | <input type="checkbox"/> | Wildflower | <input type="checkbox"/> | Crop    |
| 2. | <input type="checkbox"/> | Hay   | <input type="checkbox"/> | Straw      | <input type="checkbox"/> | Neither |

## Hay or Straw?

### SD Grasses, Wildflowers & Crops

Select Your Answers. Is it a grass, a wildflower, or a crop? Can the plant be made into hay or straw?

Mark your answers in the box below each picture and description.

Hay is grass that has been cut and dried to be used as food for animals.

Straw is the dry stems of wheat and other grain plants.

Name: \_\_\_\_\_

# Energy is Power

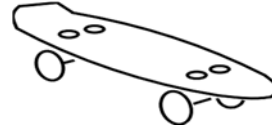
Energy is a force that makes things happen or move. List all the things you can think of that move. Beside each, indicate where the energy comes from. (*battery, electricity, sun, man*) The first two are done for you.

What Moves:

How:

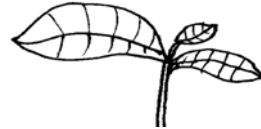
1. skateboard:

me



2. plant:

sun



3.

4.

5.

6.

7.

8.

9.

10.

11.

12.