

## BRANDON ELEMENTARY BUGLE

August 2024

1st Day of School for

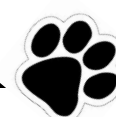
1st - 4th Grade August 21

Jr. Kdg & Kdg. 1st day ~ August 23

School hours 8:10-3:00 ~ 1st Bell at 8:00

Open House: Aug. 19 ~ 5:30 p.m.-7:00 p.m.

Jr. Kdg. & Kdg. Open House by appointment  
on August 21 or August 22.



### Welcome to Brandon Elementary

As we begin a new school year, I thought it would be helpful to provide some important information. We would like students to arrive NO EARLIER than 7:30 a.m., as that is when we will have staff supervision. If you absolutely have to be here between 7:00 and 7:30 your child **must** be dropped off at the front/north door. This applies for ALL grade levels. They will then come to the commons to wait until 7:30.

**BUS PICK UP AND DROP OFF will be at the WEST SIDE of Brandon Elementary.**

If your student arrives between 7:30 – 7:59, and not eating breakfast at school, they should go directly to their playground area to play. We have our first bell or (come inside bell) at 8:00.

**Students can be dropped off/picked at the North or South doors. Please teach your child where they will be picked up each day if they are a car rider. Also, it is very important to be consistent with your child/children's pick up spot.**

We will have adequate staff to help the students get to where they need to be in the morning and at the end of the day.

**ALL parent pick ups at the end of the day will also be on the north or south entrance. NO PARENTS ARE TO PICK UP OR DROP OFF ON THE WEST SIDE OF BRANDON ELEMENTARY. (Exception: a.m. Jr. Kdg. or a.m. ECH.**

If your child walks or rides their bike to school that is not a problem. All bike riders will need to use the north/front bike racks, or there is one small bike rack by door #7 (south end of BE) If your child(ren) arrive between 8:00 – 8:10, they will go directly to their classroom.

4th grade helpers will be wearing Dr. Seuss hats and will help the students. They will be posted throughout the building and at the north, south and west entrances.

[www.bvlynx.org](http://www.bvlynx.org)

# INTRODUCING:

## BV ATHLETIC BOOSTERS HAS A NEW WEBSITE!

- ✓ REGISTER ONLINE FOR ALL PIGSKIN ACTIVITIES IN ONE SPOT!
- ✓ SIGN UP FOR A BOOSTER MEMBERSHIP WITH UP TO 2 ACTIVITY PASSES INCLUDED!
- ✓ KEEP UP TO DATE WITH ALL SPORTS INCLUDING ROSTERS, SCHEDULES, PHOTOS, AND MORE!



FIRST DAY OF SCHOOL IS ON WEDNESDAY, AUGUST 21st FOR GRADES 1-4

FIRST DAY FOR JR. KDG AND KINDERGARTEN IS FRIDAY, AUGUST 23.

A.M. JR. KDG. 8:10-11:00

P.M. JR. KDG 12:10– 3:00

**WELCOME BACK TO BRANDON ELEMENTARY  
A GREAT PLACE TO BE!**

### **FAMILY ACCESS UPDATES**

Every school year, the Brandon Valley School District requires parents to review and update student information. These updates are completed in your Family Access account.

If you need the login or password for your Family Access account, contact your building secretary or the BV Administration Center.

**Please complete the Family Access updates for each student by Friday, September 6, 2024.**

**HOW TO COMPLETE FAMILY ACCESS UPDATES:** Visit the BVSD district website at:  
<https://brandonvalley.k12.sd.us/district/home.htm>

### **REMINDER**

When you send lunch/milk money with your child please be sure to put it in an envelope with your child's first and last name and teacher's name, marked lunch money. This will ensure it getting to the right place.

Thank you for your help!



### **2nd Chance Breakfast Information**

Breakfast is served before the bell, however for those who did not get an opportunity to eat prior to arriving at school we do offer a 2nd Chance Breakfast. The breakfast meets all nutritional guidelines, typically prepackaged items. Students who eat breakfast at school can only eat 1 breakfast and we would encourage you to discuss with your child if you will allow him/her to participate. 2nd Chance is open to anyone and you do not have to sign up for this.

*Brandon Valley School District*  
**Early Childhood  
Developmental Screening**  
**Thursday, September 26th, 2024**  
**8:30 AM– 7:30 PM**  
Brandon Elementary School



**SIGN UP NOW**

605-582-3446

[www.brandonvalley.k12.sd.us/spec\\_serv](http://www.brandonvalley.k12.sd.us/spec_serv)

South Dakota School for the Deaf will be providing free hearing screenings at this time.

Screenings are free for all children from birth to age 5 who live in the Brandon Valley School District.

**EARLY CHILDHOOD INFORMATION**

1ST DAY OF SCHOOL FOR EARLY CHILDHOOD STUDENTS IN ON MONDAY, AUGUST 26TH.

NO SCHOOL ON MONDAY, SEPTEMBER 2ND (LABOR DAY HOLIDAY)

EARLY CHILDHOOD SCREENING WILL BE HELD ON SEPTEMBER 26TH, FROM 8:30 A.M. - 8:00 P.M.

PLEASE CALL THE SPECIAL SERVICES OFFICE AT 605-582-3446 TO SET UP AN APPOINTMENT.

**\*\* THIS IS NOT KINDERGARTEN SCREENING. KDG. SCREENING WILL BE HELD IN MARCH 2025**





## BackPack Program Registration Letter to Parents/Guardians

Dear Parents/Guardians,

**BRANDON VALLEY SCHOOL DISTRICT** is partnering with Feeding South Dakota's BackPack Program to provide food to children throughout the 2023/2024 school year. The program begins in September and continues through May. The BackPack Program is designed to fill the hunger gap that exists from Friday evening until Monday morning when the children are back in school and have access to the breakfast and lunch programs.

Feeding South Dakota uses donated dollars to purchase the food for this program. Please carefully consider your family's economic status to determine if the food assistance is needed by your child(ren). *The goal of the program is to provide food to children who are hungry on a regular basis. If you are able to make do without this assistance, please allow the program to be used by others with a greater need.*

Name of Child	Grade	Teacher

I agree to allow my child(ren) to participate in Feeding South Dakota's BackPack Program. I understand that if my child opens the bag before he/she leaves school, throws food items on the playground or bus, or trashes items on the walk home, he/she will lose the privilege of participating in the program.

I understand that for children with food allergies, BackPack Program items could include ingredients such as nuts, soy, wheat, eggs, and milk. Feeding South Dakota and **BRANDON VALLEY SCHOOL DISTRICT** will not assume any liability for adverse reactions to food consumed.

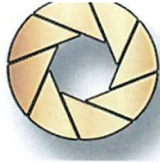
By signing this form, I agree to assume any and all risks associated with my child(ren) participating in Feeding South Dakota's BackPack Program.

---

Parent/Guardian Signature

Date

\* Please return this signed form to the Administrative Assistant or Counselor at your respective BVSD school.



# SCHOOL TIME PHOTOS

## Photography by Mark inc.

Hello Brandon parents,

We hope your summer is going great!

It's that time of year to start preparing for the next school year!

School Picture day is creeping up, so what better way to get ordering picture out of they way now.

It is easy to prepay your student's school day pictures online! Visit [www.schooltimephotos.com](http://www.schooltimephotos.com)

- **Preorder opens July 1, 2024**
- **If you are ordering for multiple students, you will need to complete an order for each student you are ordering photos of if they are not in the same school.**

### How To Order Picture Day Photos Online:

1. Go to [www.schooltimephotos.com](http://www.schooltimephotos.com)
2. Click on "Order Here"
3. Enter "**BVSD**" for the event name, click "search."
4. Click on your school district.
5. Click on your student's school.
6. Enter your email address and click "login." All orders are tracked with the email address you enter.
7. You should now see a page with our photo packages. Choose from any of our packages and/or order ala-carte items.
8. Once you are done shopping, click on the "shopping cart" icon. You will be prompted for your student's information as well as yours. That is, it!

### Picture Info You Should Know:

- All Picture Packages are on sale until 3 days after Picture Day!
- A valid email address is required to place an order.
- You will receive a confirmation email once an order is placed.
- All orders placed through Picture Day will be processed and delivered to the student's school 2-3 weeks following Picture Day.
- If you are ordering a Class Picture for an elementary student, the **Class Picture will be delivered to the school about a month after Makeup/Retake Day.**
- All portrait orders will be delivered to your student's school.

For more information, please visit our website [www.schooltimephotos.com](http://www.schooltimephotos.com)

Feel free to call or email us with any questions!  
School time Photos by Photography by Mark, INC  
605-362-9221

[www.schooltimephotos.com](http://www.schooltimephotos.com)

**PICTURE DAY IS ON SEPTEMBER 24. PICTURE MAKE UP DAY  
IS OCTOBER 29.**





# Student Injuries Can Happen

**Medical Expenses Can Be a Financial Hardship When the Unexpected Occurs**

**Approved By Your School/School District - Available for All Students PK-12**

## What is Student Accident Insurance?

- ◆ Coverage that provides financial assistance with your out-of-pocket medical expenses when your student sustains an accidental bodily injury.

## Why Consider Student Accident Insurance For Your Student?

- ◆ High Deductible/Copayments to your Family's Primary Health Insurance
- ◆ No Health Insurance for your Student
- ◆ Your Student participates in an interscholastic sport where an unexpected injury is more likely to occur.
- ◆ Your Student is prone to injuries

## Coverage Options Available Through Your School

- ◆ School Time Coverage - \$16.00
  - ◆ Interscholastic Sports Coverage  
(w/School Time-\$91.00 or 24 Hour Coverage-\$174.00)
  - ◆ 24-Hour/Full-Time Coverage - \$99.00
  - ◆ Football Coverage - \$250.00  
(Grades 9-12 for the football season)
  - ◆ Extended Dental Coverage - \$9.00
- Premium Paid Once a School Year**

## To Enroll Your Student & Review Medical Benefits

**Go to: [www.sas-mn.com](http://www.sas-mn.com)**

**or scan this QR code with  
your smart phone to be  
directed to our website**



Please locate "K-12 Students & Parents" on our homepage. Within this division, you will be able to search for your student's school district. Once located, you will have access to the following information:

- ◆ **Purchase Coverage**  
(Managed Online or by Printing/Mailing Enrollment Form and premium)
- ◆ **Brochure (English & Spanish)**  
(Explains medical benefits, exclusions and coverage options)
- ◆ **Claim Form**  
(fillable form when enrolled student sustains injury)

**For Questions, Call Student Assurance Services at (800) 328-2739**



**Specializing in Student Accident Insurance Since 1971.**

The above information is just a brief description of Student Assurance Service's student accident insurance. For more information including costs, benefits, effective dates, exclusions, limitations, please refer to [www.sas-mn.com](http://www.sas-mn.com). Students are able to purchase coverage only if his/her school district is a policyholder with the insurance company.





# Los estudiantes pueden sufrir lesiones

Los gastos médicos pueden ser una dificultad financiera ante situaciones imprevistas  
Aprobado por su escuela o distrito escolar - Disponible para todos los estudiantes de preescolar a 12.º grado

## ¿Qué es el seguro estudiantil contra accidentes?

- ♦ Es una cobertura que le proporciona asistencia financiera con sus gastos médicos de bolsillo si su estudiante sufre una lesión corporal accidental.

## Tener un seguro estudiantil contra accidentes para su estudiante le resultaría conveniente si:

- ♦ El seguro de salud principal de su familia tiene copagos o un deducible altos
- ♦ Su estudiante no tiene un seguro de salud
- ♦ Su estudiante participa en un deporte interestelar que suele provocar lesiones imprevistas
- ♦ Su estudiante es propenso a sufrir lesiones

## Opciones de cobertura disponibles a través de su escuela

- ♦ Cobertura de tiempo escolar: \$16.00
- ♦ Cobertura de tiempo completo (24 horas): \$99.00
- ♦ Cobertura de deportes interestelares (con cobertura de tiempo escolar por \$91.00 o cobertura de 24 horas por \$174.00)
- ♦ Cobertura de fútbol americano: \$250.00 (De 9.º a 12.º grado para la temporada de fútbol americano)
- ♦ Cobertura dental extendida: \$9.00

La prima se paga una vez por año escolar

## Para inscribir a su estudiante y revisar los beneficios médicos

Visite: [www.sas-mn.com](http://www.sas-mn.com)

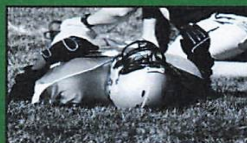
o escanee este código QR con su teléfono inteligente para ir a nuestro sitio web



Busque "K-12 Students & Parents" (Padres y estudiantes de preescolar a 12.º grado) en nuestra página de inicio. Dentro de esta división, podrá buscar el distrito escolar de su estudiante. Una vez que lo encuentre, tendrá acceso a la siguiente información:

- ♦ Adquisición de cobertura  
(Administrada en línea o mediante la impresión o el envío por correo del formulario de inscripción y la prima)
- ♦ Folleto (en inglés y español)  
(Detalla los beneficios médicos, las exclusiones y las opciones de cobertura)
- ♦ Formulario de reclamación  
(formulario que debe completarse cuando un estudiante sufre una lesión)

Si tiene preguntas, llame a Student Assurance Services al (800) 328-2739.



**Especialistas en seguros estudiantiles contra accidentes desde 1971.**

La información anterior es solo una breve descripción del seguro estudiantil contra accidentes de Student Assurance Services. Para obtener más información, incluidos costos, beneficios, fechas de entrada en vigencia, exclusiones y limitaciones, visite [www.sas-mn.com](http://www.sas-mn.com). Los estudiantes pueden adquirir la cobertura solo si su distrito escolar es titular de una póliza de la compañía de seguros.



**STUDENT ACCIDENT INSURANCE COVERAGE**  
POLICY GA-2200Ed.11-16(ID)(KS)(LA)(MN)(MT)(NC)(ND)(OH)(SD)

**Premiums & Coverage Options**

**One Time Policy Year Premiums**

<b>School Time Coverage Grades PK-12 (Does NOT Include Interscholastic Sports Coverage grades 7-12)</b> Protects the student while: a) attending regular school sessions, b) participating in or attending school-sponsored and supervised extracurricular activities, c) traveling directly to and from school for regular school sessions, and while traveling to and from school-sponsored and supervised extracurricular activities in school provided transportation. DOES NOT cover participation in interscholastic sports for students in grades 7-12.	<b>\$16</b>
<b>Full Time Coverage Grades PK-12 (Does NOT Include Interscholastic Sports Coverage grades 7-12)</b> Covers the student 24 hours a day until school starts next year. Includes coverage while at home and school, on weekends and during summer vacation. DOES NOT cover participation in interscholastic sports for students in grades 7-12.	<b>\$99</b>
<b>School Time Coverage Grades PK-12 AND Interscholastic Sports Coverage Grades 7-12 (does not include Football grades 9-12)</b> In addition to School-Time Coverage shown above, includes All Interscholastic Sports Coverage that protects the student while practicing for or competing in school-sponsored and supervised interscholastic sports including travel in school provided transportation for grades 7-12. DOES NOT cover Football for grades 9-12.	<b>\$91</b>
<b>Full Time Coverage Grades PK-12 AND Interscholastic Sports Coverage Grades 7-12 (does not include Football grades 9-12)</b> In addition to the Full-Time Coverage shown above, includes All Interscholastic Sports Coverage that protects the student while practicing or competing in school-sponsored and supervised interscholastic sports including travel in school-provided transportation for grades 7-12. DOES NOT cover Football for grades 9-12.	<b>\$174</b>
<b>Football Coverage Grades 9 - 12</b> Protects the student while practicing for or competing in school-sponsored and supervised interscholastic football including travel in school-provided transportation for grades 9-12.	<b>\$250</b>
<b>Extended Dental Coverage Grades PK-12</b> Provides benefits up to a maximum of \$5,000 for any dental injury. Covers the student 24 hours a day until school starts next year. Treatment must begin within 60 days from the date of the injury and must be performed within one year from the date of injury. However, if within the one year period following the date of injury the student's attending dentist certifies that dental treatment and/or replacement must be deferred beyond one year, the policy pays the estimated cost of such deferred treatment, but not to exceed \$200 for each tooth. Benefits for prostheses are limited to \$500 per injury, including procedures performed to install them. Dental prostheses include, but are not limited to: crowns, dentures, bridges, and implants. Extended Dental does not cover treatment for orthodontics, dental disease, or expenses that exceed the dental prosthesis maximum benefit limit.	<b>\$9</b>

**The Medical Benefits and Exclusions below apply to the Coverage Options listed above.**

**MEDICAL BENEFITS (What the Insurance Plan Pays)** - When injury covered by the policy results in treatment by a Licensed Physician within 60 days from the date of accident, the Company will pay the Usual and Customary Charges (U&C) incurred for covered services as listed below, for charges actually incurred within one year from the date of injury up to the specified Maximum Medical Benefit of \$50,000 per injury. (In MT and NC benefits are payable after the deductible per injury is satisfied, the deductible is the amount paid or payable for the same injury by Other Valid Coverage) This policy will pay benefits regardless of Other Valid Coverage if the covered claim expense is less than \$200. If the covered claim expense exceeds \$200, benefits shall be paid first by Other Valid Coverage. (This coverage is excess in KS, and this coverage is primary in MT and NC after deductible, and in ID, IL)

**All Amounts Listed Below are Per Injury**

<b>PHYSICIAN'S SERVICES</b>	
a) <b>Surgical Care</b> (surgeon, assistant surgeon, and anesthesia) .....	80% U&C, up to \$2,500
b) <b>Nonsurgical Care</b> (includes physiotherapy performed other than in a hospital, 1 visit per day).....	U&C, up to \$50 per visit, maximum 6 visits
<b>HOSPITAL CARE</b>	
a) <b>Inpatient Care</b>	
1) <b>Hospital Semi-Private Room</b> .....	U&C, up to \$500 per day
2) <b>Hospital Miscellaneous Services</b> .....	80% U&C, up to \$2,500
b) <b>Outpatient Care</b>	
1) <b>Facility Charges for Day Surgery</b> .....	U&C, up to \$2,500
2) <b>Emergency Room</b> .....	80% U&C, up to \$500
<b>Note: Benefits for hospital miscellaneous and outpatient care charges are limited to services not scheduled under Medical Benefits.</b>	
<b>X-RAY SERVICES</b> (includes charges for reading) .....	U&C, up to \$250
<b>LABORATORY SERVICES</b> .....	U&C, up to \$250
<b>DIAGNOSTIC IMAGING</b> (includes MRI, CT scan, bone scan and charges for reading) .....	U&C, up to \$500
<b>DENTAL TREATMENT</b> (in lieu of all other medical benefits; for repair and/or replacement of each sound and natural tooth) .....	U&C, up to \$250 per tooth (In SD, sound and natural is deleted)
<b>AMBULANCE SERVICES</b> .....	U&C, up to \$500
<b>ORTHOPEDIC APPLIANCES</b> (when prescribed by a physician for healing) .....	U&C, up to \$250
<b>PRESCRIPTION DRUGS</b> (take home) .....	U&C, up to \$250
<b>REPLACEMENT EYEGLASSES, CONTACT LENSES, HEARING AIDS</b>	
(when medical treatment is required for covered injury) .....	U&C, up to \$250
<b>MOTOR VEHICLE INJURY</b> .....	Same as any injury, up to \$2,500 (In KS, \$2,500 limit does not apply)

**ACCIDENTAL DEATH AND DISMEMBERMENT**

When injury covered by this policy results in Accidental Death or Dismemberment within 180 days from the date of accident, the following benefits will be payable.

Loss of Life .....	\$2,500	Loss of an Eye .....	\$2,500	Double Dismemberment .....	\$10,000	Single Dismemberment .....	\$2,500
--------------------	---------	----------------------	---------	----------------------------	----------	----------------------------	---------

The policy contains a provision limiting coverage to the usual and customary charges. This limitation may result in additional out-of-pocket expenses for the insured.  
I-1511/1513(2023)



**ENROLLMENT FORM FOR STUDENT ACCIDENT INSURANCE**

**COVERAGE PLANS**

**One Time Policy Year Premiums**

↑ STUDENT'S LAST NAME ↑ (one letter in each box)

STUDENT'S FIRST NAME M.I.

Please Print Address (Street) (City) (State) (Zip)

Email Address

Name of School

Name of District

Student's Age Grade Phone

X

GAA-2203Ed.11-16 (Signature of Parent or Guardian) (Date)

<b>Full Time Coverage (Does NOT include Interscholastic Sports Coverage)</b>	<input type="checkbox"/> <b>\$ 99</b>
<b>Full Time Coverage AND Interscholastic Sports Coverage (Does not include Football Grades 9-12)</b>	<input type="checkbox"/> <b>\$174</b>
<b>School Time Coverage (Does NOT include Interscholastic Sports Coverage)</b>	<input type="checkbox"/> <b>\$ 16</b>
<b>School Time Coverage AND Interscholastic Sports Coverage (Does not include Football Grades 9-12)</b>	<input type="checkbox"/> <b>\$ 91</b>
<b>Football Coverage (Grades 9-12)</b>	<input type="checkbox"/> <b>\$250</b>
<b>Extended Dental Coverage (Grades PK-12)</b>	<input type="checkbox"/> <b>\$ 9</b>

DO NOT SEND CASH

TOTAL PREMIUM

Make Checks payable to: **STUDENT ASSURANCE SERVICES, INC.**  
\*Please write student's name on the front of check. **NO REFUNDS**

I-1511/1513(2023)



1. Any sickness, disease, infection (unless caused by an open cut or wound), including but not limited to: aggravation of a congenital condition, blisters, headaches, hernia of any kind, mental or physical infirmity, Osgood-Schlatter disease, osteochondritis, osteochondritis dissecans, osteomyelitis, spondylolysis, slipped femoral capital epiphysis, orthodontics.
2. Injuries for which benefits are paid under Workers' Compensation or Employer's Liability Laws. (In NC, benefits are excluded if the employee, employer, or carrier is responsible or liable according to final adjudication or settlement order under state law)
3. Any Injury involving a two or three-wheeled motor vehicle or snowmobile or any motorized or engine driven vehicle not designed primarily for use on public streets and highways, unless the insured is participating in an activity sponsored by the Policyholder. (In ID, Insured must be participating as a professional)
4. The practice or play of interscholastic sports including travel to or from such activity, practice, or play for students in grades 7-12, unless such premium is paid.
5. In Kansas - No benefits are payable for accidental bodily Injuries arising out of a motor vehicle accident to the extent such benefits are payable under any medical expense payment provision (by whatever terminology used including such benefits mandated by law) of any automobile policy.
6. In Ohio - Reinjury if the insured participated in a covered activity against medical advice.

### WHAT KIND OF INSURANCE IS THIS?

### WHO SHOULD CONSIDER BUYING THIS INSURANCE?

- ## HOW TO ENROLL

- ## EFFECTIVE AND EXPIRATION DATES

## HOW TO FILE A CLAIM

- This provides a very brief description of some of the important features of the insurance policy. It is not the insurance policy and does not represent it. A full explanation of benefits, exceptions and limitations is contained in the Group Accident Insurance Policy Form GA-2200Ed.11-16 (and any state specific), and any applicable endorsement(s). This policy is considered term accident insurance (except in ID) and is non-renewable. This product may not be available in all states and is subject to individual state regulations. The Master Policy is issued to the School District/School. A copy of the Privacy Notice and Certificate of Coverage (where applicable) may be obtained on the website [www.sas-mn.com](http://www.sas-mn.com).

I-1511/1513(2023)



**STUDENT  
ASSURANCE  
SERVICES**  
INCORPORATED

**Ameritas**   
Ameritas Life Insurance Corp.  
Lincoln, Nebraska

## I-1511/1513(2023)

## CHAIN OF COMMAND

The staff at Brandon Elementary care about each and every student. We have established this chain of command for our students. We find it to be the quickest and most effective way to resolve a concern regarding your child.

This chain of command allows us to address it at the most direct level. We appreciate your partnering with us to encourage your child to follow the chain of command. This will empower them to resolve concerns.

1. Me, Myself and I
2. Outdoor Supervisor
3. Teacher
4. Principal
5. Parent



shutterstock.com · 1250915629

# Welcome to Brandon Elementary

We are glad you are here!

## REMINDERS

The first day of school for  
Jr. Kdg. and Kindergarten is on Friday, August 23rd.  
Grades 1st - 4th start on August 21st.  
There is NO SCHOOL on  
Monday, September 2nd.

### WHERE DO I PICK UP MY CHILD?

If you pick up your child(ren), you will need to do so  
at the North End (door#1) or South End (door #7).

The BV busses will be picking up students on the  
west side of Brandon Elementary.

You will be able to pick them up, or drop them off in the north park-  
ing lot, or the south pick up area. It is very helpful for your child to  
know which is which. This might be a helpful hint. You could tell  
them either by the flagpole, NORTH Entrance, or by the  
BIG GUMDROPS, SOUTH entrance.



Brandon Elementary is a GREAT place to BE

BREAKFAST, 2nd CHANCE BREAKFAST and  
LUNCH are all served on the first day of school  
(August 21st).



# WELCOME BACK TO SCHOOL







**FEEDING<sup>®</sup>**  
**SOUTH DAKOTA**  
**BackPack Program**

## Participation Form

Dear Parents/Guardians:

Your child's school is partnering in the Backpack Program with Feeding South Dakota. Through this program, children up to 18 years of age may receive a bag of nutritious, easy-to-prepare foods during weekends and holidays when school is not in session. Backpack bags are available September-May.

If you would like your child to receive a Backpack bag, please complete the following, for each of your children at this school, and return it to the school:

Name of Child	Grade	Teacher

\_\_\_\_\_  
Parent/Guardian Signature

\_\_\_\_\_  
Date

Feeding South Dakota also offers mobile food distributions at 12 locations in Sioux Falls. If your family, or someone you know, needs food assistance you are welcome to visit any one of these sites once every 30 days to receive a variety of fresh and frozen produce, dairy, meat, bread, and other non-perishable food items.

First United Methodist Church	401 Spring Ave	5:30-7pm	1st Wed of each month
Peace Lutheran Church	5509 W 41st St	5:30-6:30pm	2nd Mon. of each month
King of Glory Church	1001 E 17th St	5:30-6:30pm	1st Tues of each month
Laura B Anderson Elementary	1600 N Wayland Pl	5:30-6:30pm	2nd Tues of each month
First Presbyterian	2300 S West Ave	9:00-10:00am	2nd Sat of each month
The Point is to Serve	506 N Kiwanis Ave	2:30-3:30pm	2nd Sat of each month
Faith Lutheran Church	601 N Cliff Ave	1-2:30pm	3rd Tues of each month
Sanford Business Center	2200 E Benson	5:30-6:30pm	3rd Tues of each month
Hillcrest Church	4301 E 26th St	5:30-7pm	3rd Wed of each month
Good News Church	1800 S Valley View Rd	5:30-6:30pm	4th Tues of each month
Empower Campus	2001 E 8th St	11:00am-12:30pm	2nd Sat of each month
Trinity Lutheran Church	335 West 1 <sup>st</sup> Streer	4:00pm-6:00pm	3 <sup>rd</sup> Thursday of each month

*Feeding South Dakota is an equal opportunity provider. Dates and times of mobile food distributions are subject to change. Visit <https://www.feedingsouthdakota.org/mobile> or call 2-1-1 for the most recent information. Questions?*

*Contact Feeding South Dakota at 605-335-0364 or [info@feedingsouthdakota.org](mailto:info@feedingsouthdakota.org)*

## **FAMILY ACCESS UPDATES**

Every school year the Brandon Valley School District requires parents to review and update student information. These updates are completed in your Family Access account.

If you don't have a Family Access account, contact your building secretary or the BV Administration Center to create one.

**Please complete the Family Access updates for each student by Friday, September 6, 2024.**

### **HOW TO COMPLETE FAMILY ACCESS UPDATES:**

To review and update student information, log onto your Family Access account ([brandonvalleyschools.com](http://brandonvalleyschools.com), Skyward tab), and select the "Family Access Update" tab on the left-hand menu. Even if your information hasn't changed from year to year, you still need to confirm that it is correct (bottom of each page).

#### Free and Reduced Applications

The application for free and reduced meals for the 2024-2025 school year is **available now**. This application process will also be submitted online through Family Access instead of completing a paper application. You can access the application while completing the Family Access Update, or you can select the "Food Service" tab in Family Access.

Computers will be available in all schools and the BV Administration Center for families to use throughout the school year.

The Brandon Branch of the Siouxland Public Libraries (located at the Brandon Valley High School) also has computers to use if you have a library card (library cards are free for Brandon and Minnehaha County residents).

## **Staying connected throughout the school**

Parents/Guardians,  
During the school year I will send out various emails through Skyward messenger to inform you of a variety of information. You will be able to reply to those emails if you should happen to have any questions. This will also be a way that I communicate any fire or tornado drills that we have during the school year.





## SCHOOL HOURS

On the first day of school there will be 4<sup>th</sup> grade student helpers throughout the building, INSIDE AND OUTSIDE. They will be wearing Dr. Suess hats and nametags. They are happy to help parents/students.

All Students, Kindergarten - 4th grade begin their day at 8:10 a.m. and end at 3:00 p.m. Our 1st bell rings at 8:00 and students are brought in to begin preparing for the school day. The 2nd bell rings at 8:10. After 8:10 your child would be marked as tardy.

Jr. A.M. class attends from 8:10-11:00. The Jr. Kdg.P.M. class attends from 12:10 - 3:00. If your child should arrive late on any school day they should stop in the office to receive an admit slip before going to their classroom. If you are arriving late you will need to enter door #1 (north entrance by the flagpole)



## VISITORS

For the safety and security of guests and students, ALL visitors must check in at the office. There is a buzzer system to gain entrance to the office. Please push the buzzer and I will let you in as soon as I can. ALL OUTSIDE doors are locked at 8:10 and will remain locked all day. Entry to the school will be through the secured entrance at the North end only. **Visitors are asked to refrain from coming to lunch with their child(ren) for the first 3 weeks of school. This gives students and staff time to establish a routine.**

## ATTENDANCE

Parents are required to call the office in the morning (prior to 8:30) if your child will be absent from school. If a call is not made, the office will attempt to contact a parent at home or work. If you are taking a vacation during the school year please notify the office of the days your child(ren) will be gone. Children coming in late or leaving early due to an appointment are required to check in at the office upon arriving or before leaving the building. It is VERY helpful if we know ahead of time if your child would be leaving early.



## BREAKFAST/LUNCH ACCOUNTS

Deposits can be made into your child's food service account the evening of open house or anytime before the first day of school. The price for breakfast this year is \$2.05 and serving begins at 7:40 each morning. Lunch prices this year are \$3.05 for students and \$5.10 for adults. If your child chooses to have milk in the morning for break, it's \$.40, snack is \$1.00. If your child chooses to have 2nds on a food/beverage item, there will be a fee for this. We ask that you maintain a positive balance in your food service account. As you send in lunch money throughout the school year, please place it in an envelope with your child's name, teachers name and indicating that it is "LUNCH MONEY".



### IN-TOWN BUS PASSES/BUSSING NEEDS OR QUESTIONS

Bus passes are sold through the Transportation Office located at 812 Redwood Blvd. During the school year if you have bus route changes or questions regarding your child's transportation please contact David, Maggie, or Laurie at 605-582-3514.

### SCHOOL PICTURES



Brandon Elementary will have school pictures taken on **TUESDAY, SEPTEMBER 24th** for Early Childhood—4th The pictures will be taken by Photography by Mark. Re-Take day is Tuesday, Oct. 29th.

If you do not wish to place an order, we ask that your child's picture still be taken in order to be included in the yearbook. Questions regarding your school pictures? Photography by Mark can be reached at 605-362-9221.

### PRESCRIPTION MEDICATIONS

If your student will be receiving prescription medication during the school day, we are requesting that this medication be brought to the nurse's office PRIOR to the first day of school. The medication must be accompanied with the Medication Consent Form, signed by the attending physician and the parent/guardian. Medications WILL NOT be administered unless the guidelines are in full compliance. Forms can be found online at the Elementary website, <http://brandonvalley.k12.sd.us/district/home.htm>  
Nurse's office phone: 605-582-3642



## COMMUNICATION

Communication is one of the key components to the success of any school. We know that for many of you, e-mail is one of your primary communication tools so this year we would like to continue our use of e-mail as a method of communicating with you. Along with email directly from the school office/Sandy Cummings, School Messenger (Telephone notification service from the BV District office) to send out reminders about upcoming school events, changes in the schedule, and much more! E-mail addresses will be made available to teachers who wish to make a distribution list to keep parents informed about upcoming events in their classrooms. We will not be sharing this information with anyone outside of the school. Other important communication tools provided by the school district include (<http://brandonvalley.k12.sd.us/district/home.htm>). Family Access is available for those that wish to stay current on their child's grades, attendance, and lunch accounts. If you have not set up your Family Access account, please call the office and do so. The district has the Brandon Valley Student Handbook online.



## PARENTS RIGHT TO KNOW



The federal education law called the Every Student Succeeds Act of 2015 requires that all parents in a Title I school be notified and given the opportunity to request information about the professional qualifications of classroom teachers instructing their child. If you are interested in this information, you may send your request to



the building principal who will provide a response. Upon request, any patron of the district may review a copy of the NCLB State Reports. Brandon Valley School District's accountability and assessment reports can be reviewed in the following offices between the hours of 7:45 a.m. and 4:00 p.m. during all work days: Office of the Superintendent, Office of the Director of Special Services and all Building Principals'

Offices. Website links of the same information are also available: <http://brandonvalley.k12.sd.us/district/home.htm> and <http://doe.sd.gov/reportcard/index.aspx> .

## Birthday Book Club



Brandon Elementary is pleased to announce the 20th year of our Birthday Book Club. This is a **VOLUNTARY** program designed for parents to recognize their child's birthday and to add some additional books to our library. Here are the key facts:

At least two weeks prior to your child's birthday, please bring the book to the office. This allows the staff ample time to process the book for our collection. On your child's birthday, a special announcement will be made recognizing their birthday. There will be a notation in the book indicating who donated the book and noting your child's birthday.

The birthday student will be the first one to check out their book. After that, the book will be added to the library. To allow for the wear and tear of a book in our library, a book for the library collection must be a hard back book. If you donate a paperback book or a "Golden" book, it will become part of the collection in your child's classroom. Please make sure that the selected book will be appropriate for all students. It is important to respect our spirit of diversity so religious or inappropriate subject matter should be avoided as you make your book selection. To avoid the endless marketing of toys and movies, we prefer **NOT** to have books that reflect a recent movie or action figure.

If you have any questions about what book to select, please feel free to contact the office and we will offer suggestions.

Please remember that this program is *voluntary* and you are not expected to provide a book.

**REMEMBER:** Please bring the book to the office two weeks prior to the birthday so that it can be processed.

Thank you for your support of this program!

=====

## Delta Dental Accident Plan

In the past we have sent home the Delta Dental Accident Plan with the students. Again this year, Delta Dental of South Dakota has decided to discontinue this method of distribution. The plan will be offered but applications will be available online at the Delta Dental website, [www.deltadentalsd.com](http://www.deltadentalsd.com)



## **MAKE A DIFFERENCE IN THE LIFE OF A CHILD. BECOME A MENTOR!**

Brandon Valley School District, in partnership with Lutheran Social Services, is looking for volunteers to mentor students in the Brandon Valley Public Schools. Mentors and students meet at school for one hour per week and enjoy a variety of activities, such as playing board games, reading books, shooting hoops or simply eating lunch and talking. Many mentors choose to volunteer over their lunch hour from work. It's a small time commitment that can make a lifetime of difference!



**To learn more, contact the School-Based Mentor Program:**

605-221-2403 | [mentoring@lsssd.org](mailto:mentoring@lsssd.org) | [www.mentoring.lsssd.org](http://www.mentoring.lsssd.org)

## **The importance of breakfast**

We ask you to make sure that your child has breakfast either at home or at school prior to the school day starting. We will still have a milk break for the students if they choose to have milk.

Milk is \$.40 each day.

There WILL be breakfast on the 1st day of school.



## **LUNCH ACCOUNT MONITORING**

**The office staff does not have access to view your child's balance in lunch accounts. Please be sure to sign up for Family Access to be able to view your child's lunch account and more. Please call Sandy at 582-6315 to get set up for this very valuable tool.**







## HEALTH NOTES FROM THE SCHOOL NURSE

Jacque Terveer, RN

Welcome back! We hope you have had a fun and restful summer and are ready to return to the daily routine of school.

There have been an increasing number of problems with students in K-12 carrying medications (prescription and over-the-counter medications) on school property. This has become a major safety concern and we need your help to address this problem. Medications have been found on the bus, in the hallways and classrooms, as well as outside on school grounds. Our policy remains that students cannot carry medication with the exception of emergency medications (i.e. epi-pens, inhalers, diabetic supplies).

If your student needs to take medication at school:

**A parent must bring medication to school** and complete the proper paperwork. Do not send medications with your child to school. Forms can be found in each school office or on the school website under the parent tab, and then click on school nurse.

Medications must be provided in the original medication bottle that is properly labeled with the medication and the child's name. This includes prescription and over-the-counter medications.

Unused medications must be picked up by a parent on the last day of school. Any medication left at school after the last day will be properly disposed.

As stated in the Student Handbook:

*Any student found to have any medication in their possession or sharing of any medication on school property may face serious disciplinary actions which may include expulsion.*

If your child will require medication or a diet modification next year, appropriate forms should be completed and returned to the office by the first day of school. These forms are available in the school office or can be downloaded from the school website, <http://brandonvalley.k12.sd.us/> Select Parent Resources from the menu on the left, then click on School Nurses.

Thank you for helping keep all of our students safe!  
Nurse's office phone: 605-582-3642

## AFTER SCHOOL MESSAGES



Please make every effort possible to discuss after school plans with your child before leaving for school in the morning. *If* there are different arrangements in how your child we get home at the end at the end of the day, PLEASE be sure to notify the teacher with a note or an e-mail. If we do not have a note the child will take their normal way home/daycare. This also helps eliminate confusion at the end of the day. At times we run into the problem of students missing the bus due to trying to make last minute plans.

### \*\*\*\*\*IMPORTANT NEW INFORMATION:

Due to time restraints, end of the day messages must be called in **NO LATER than 2:45**. This allows staff time to deliver messages to our students. Thank you for your cooperation.

## IMPORTANT PHONE NUMBERS

Brandon Elementary: 582-6315 ~ sandy. Cummings@k12.sd.us

Early Childhood/birth to 3: 582-3446

Transportation: 582-3514

Brandon Valley Intermediate School: 582-6035

Brandon Elementary Nurse's office: 582-3642  
Jacque.terveer@k12.sd.us

Child Nutrition Office: 582-3926



## SCHOOL DISMISSAL

The school day ends at 3:00 p.m. After school supervision ends at 3:15 p.m. each day. All students *must* be picked up by this time, unless *prior* arrangements have been made with the office. Please consider after school care for your child/children if they can not be picked up by 3:15.

Thank you for your cooperation.



# August Lunch Menu



SUNDAY	MONDAY	TUESDAY	WEDNESDAY	THURSDAY	FRIDAY	SATURDAY
				1	2	3
4	5	6	7	8	9	10
11	12	13	14	15	16	17
18	19	20	21 Hamburger Baked Chips	22 Four Cheese Pizza Green Beans	23 BBQ Mr. Rib Sandwich Baked Beans	24
25	26 Italian Dunkers Green Beans	27 Nacho Grande Corn/Black Bean Salsa	28 Chicken Patty Potato Wedges	29 Mini Corn Dogs Pea/Carrot Blend	30 Cheeseburger Mac Broccoli Garlic Breadstick	31 BV Pigskin Classic

# BRANDON VALLEY EARLY CHILDHOOD

## 2024-2025 School Calendar


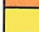



July '24							August '24							September '24							October '24						
Su	M	Tu	W	Th	F	Sa	Su	M	Tu	W	Th	F	Sa	Su	M	Tu	W	Th	F	Sa	Su	M	Tu	W	Th	F	Sa
	1	2	3	4	5	6					1	2	3	1	2	3	4	5	6	7			1	2	3	4	5
7	8	9	10	11	12	13	4	5	6	7	8	9	10	8	9	10	11	12	13	14	6	7	8	9	10	11	12
14	15	16	17	18	19	20	11	12	13	14	15	16	17	15	16	17	18	19	20	21	13	14	15	16	17	18	19
21	22	23	24	25	26	27	18	19	20	21	22	23	24	22	23	24	25	26	27	28	20	21	22	23	24	25	26
28	29	30	31				25	26	27	28	29	30	31	29	30						27	28	29	30	31		
													4							15							17

November '24							December '24							January '25							February '25						
Su	M	Tu	W	Th	F	Sa	Su	M	Tu	W	Th	F	Sa	Su	M	Tu	W	Th	F	Sa	Su	M	Tu	W	Th	F	Sa
					1	2	1	2	3	4	5	6	7				1	2	3	4							1
3	4	5	6	7	8	9	8	9	10	11	12	13	14	5	6	7	8	9	10	11	2	3	4	5	6	7	8
10	11	12	13	14	15	16	15	16	17	18	19	20	21	12	13	14	15	16	17	18	9	10	11	12	13	14	15
17	18	19	20	21	22	23	22	23	24	25	26	27	28	19	20	21	22	23	24	25	16	17	18	19	20	21	22
24	25	26	27	28	29	30	29	30	31					26	27	28	29	30	31		23	24	25	26	27	28	
						13							12							14							15

March '25							April '25							May '25							June '25						
Su	M	Tu	W	Th	F	Sa	Su	M	Tu	W	Th	F	Sa	Su	M	Tu	W	Th	F	Sa	Su	M	Tu	W	Th	F	Sa
						1			1	2	3	4	5					1	2	3	1	2	3	4	5	6	7
2	3	4	5	6	7	8	6	7	8	9	10	11	12	4	5	6	7	8	9	10	8	9	10	11	12	13	14
9	10	11	12	13	14	15	13	14	15	16	17	18	19	11	12	13	14	15	16	17	15	16	17	18	19	20	21
16	17	18	19	20	21	22	20	21	22	23	24	25	26	18	19	20	21	22	23	24	22	23	24	25	26	27	28
23	24	25	26	27	28	29	27	28	29	30				25	26	27	28	29	30	31	29	30					
30	31					15							16							12							

	SCHEDULED OPEN HOUSE APPOINTMENTS
	EARLY CHILDHOOD FIRST/LAST DAY OF SCHOOL
	NO SCHOOL DAYS
	PARENT/TEACHER CONFERENCES (NO SCHOOL)
	SCHOOL DAYS

<b>August 21-23:</b> Open House Appointments	<b>January 13:</b> Inservice (no school)
<b>August 26:</b> First Day of School	<b>January 20:</b> MLK Jr Day (no school)
<b>September 2:</b> Labor Day (no school)	<b>January 30:</b> EC Screening (no school)
<b>September 26:</b> EC Screening (no school)	<b>February 17:</b> President's Day (no school)
<b>October 7:</b> Conferences (no school)	<b>March 11:</b> Conferences (no school)
<b>October 14:</b> Inservice (no school)	<b>March 13:</b> Snow Day (no school if unused)
<b>November 11:</b> Veterans Day (no school)	<b>April 17-21:</b> Spring Break (no school)
<b>November 27-29:</b> Thanksgiving (no school)	<b>May 21:</b> Last Day of School
<b>Dec 23-Jan 1:</b> Winter Break (no school)	

TOTAL SCHOOL DAYS: 133



# Brandon Valley School District 2024-2025

Adopted 01-22-2024

July 2024						
Su	M	Tu	W	Th	F	Sa
	1	2	3	4	5	6
7	8	9	10	11	12	13
14	15	16	17	18	19	20
21	22	23	24	25	26	27
28	29	30	31			

## July

January 2025						
Su	M	Tu	W	Th	F	Sa
			1	2	3	4
5	6	7	8	9	10	11
12	13	14	15	16	17	18
19	20	21	22	23	24	25
26	27	28	29	30	31	

January	
1	Winter Break - No School
10	End of Second Quarter (45 Days)
13	Staff: .5 Flexible Workshop (No School)
20	MLK Jr. Day - No School

August 2024						
Su	M	Tu	W	Th	F	Sa
				1	2	3
4	5	6	7	8	9	10
11	12	13	14	15	16	17
18	19	20	21	22	23	24
25	26	27	28	29	30	31

August	
13	New Staff In-Service (No School)
15	Staff: AM In-Service, PM Workshop
19	Staff: In-Service
20	Staff: AM In-Service, PM Workshop
21	First Day of School

February 2025						
Su	M	Tu	W	Th	F	Sa
						1
2	3	4	5	6	7	8
9	10	11	12	13	14	15
16	17	18	19	20	21	22
23	24	25	26	27	28	

February	
14	No School
17	President's Day - No School

September 2024						
Su	M	Tu	W	Th	F	Sa
1	2	3	4	5	6	7
8	9	10	11	12	13	14
15	16	17	18	19	20	21
22	23	24	25	26	27	28
29	30					

September	
2	Labor Day - No School

March 2025						
Su	M	Tu	W	Th	F	Sa
						1
2	3	4	5	6	7	8
9	10	11	12	13	14	15
16	17	18	19	20	21	22
23	24	25	26	27	28	29
30	31					

March	
10	Conferences (IS/MS) 3:30 p.m. - 9:30 p.m. Regular Dismissal for Students
11	Conferences (EL/HS) 3:30 p.m. - 9:30 p.m. Regular Dismissal for Students
13	Snow Day - No School if unused
14	Comp Day - No School
21	End of Third Quarter (44 Days)

October 2024						
Su	M	Tu	W	Th	F	Sa
		1	2	3	4	5
6	7	8	9	10	11	12
13	14	15	16	17	18	19
20	21	22	23	24	25	26
27	28	29	30	31		

October	
7	Conferences (EL/HS) 3:30 p.m. - 9:30 p.m. Regular Dismissal for Students
8	Conferences (IS/MS) 3:30 p.m. - 9:30 p.m. Regular Dismissal for Students
11	Comp Day - No School
14	Staff In-Service (No School)
23	End of first Quarter (43 days)

April 2025						
Su	M	Tu	W	Th	F	Sa
		1	2	3	4	5
6	7	8	9	10	11	12
13	14	15	16	17	18	19
20	21	22	23	24	25	26
27	28	29	30			

April	
17	Two Hour Early Dismissal
18-21	Spring Break - No School

November 2024						
Su	M	Tu	W	Th	F	Sa
					1	2
3	4	5	6	7	8	9
10	11	12	13	14	15	16
17	18	19	20	21	22	23
24	25	26	27	28	29	30

November	
11	Veterans Day - No School
27-29	Thanksgiving Break - No School

May 2025						
Su	M	Tu	W	Th	F	Sa
				1	2	3
4	5	6	7	8	9	10
11	12	13	14	15	16	17
18	19	20	21	22	23	24
25	26	27	28	29	30	31

May	
11	Graduation
22	Last Day of School (Two Hour Early Dismissal)
22	End of Fourth Quarter (42 Days)
23	.5 Staff Workshop (No School)
26	Memorial Day

December 2024						
Su	M	Tu	W	Th	F	Sa
1	2	3	4	5	6	7
8	9	10	11	12	13	14
15	16	17	18	19	20	21
22	23	24	25	26	27	28
29	30	31				

December	
20	Two Hour Early Dismissal
23-31	Winter Break - No School

June 2025						
Su	M	Tu	W	Th	F	Sa
1	2	3	4	5	6	7
8	9	10	11	12	13	14
15	16	17	18	19	20	21
22	23	24	25	26	27	28
29	30					

TEACHERS:	
174	Student Days
2	Comp Days for P/T Conferences
3	In-Service Days
2	Workshop Days
181	TOTAL



## **BRANDON VALLEY SCHOOL DISTRICT 2024-2025 Calendar**

Adopted 01-22-2024

Tues., Aug 13	New Staff In-service
Thurs., Aug 15	Staff - A.M. In-service, P.M. Workshop
Mon., Aug 19	Staff - In-service
Tues., Aug 20	Staff - A.M. In-service, P.M. Workshop
Wed., Aug 21	First Day of School
Mon., Sept 2	Labor Day - No School
Mon., Oct 7 (regular dismissal)	Conferences (Elementary/HS), 3:30 p.m.-9:30 p.m.
Tues., Oct 8 (regular dismissal)	Conferences (IS/MS), 3:30 p.m.-9:30 p.m.
Fri., Oct 11	Comp Day - No School
Mon., Oct 14	Staff - In-service - No School
Wed., Oct 23	End of First Quarter (43 days)
Mon., Nov 11	Veteran's Day - No School
Wed.-Fri., Nov 27-29	Thanksgiving Break - No School
Fri., Dec 20 (two hour early dismissal)	Two hour early dismissal
Mon., Dec 23 - Wed., Jan 1	Winter Break - No School
Fri., Jan 10	End of Second Quarter (45 days)
Mon., Jan 13	Staff - .5 Flexible Workshop - No School
Mon., Jan 20	MLK Jr. Day - No School
Fri., Feb 14	No School
Mon., Feb 17	President's Day-No School
Mon., Mar 10 (regular dismissal)	Conferences (IS/MS) 3:30 p.m.-9:30 p.m.
Tues., Mar 11 (regular dismissal)	Conferences (Elementary/HS), 3:30 p.m.-9:30 p.m.
Thurs., Mar 13	Snow Day - No School if unused
Fri., Mar 14	Comp Day - No School
Fri., Mar 21	End of Third Quarter (44 days)
Thurs., April 17 (two hour early dismissal)	Two hour early dismissal
Fri.-Mon., April 18 - 21	Spring Break - No School
Sun., May 11	Graduation
Thurs., May 22 (two hour early dismissal)	Last Day of School - End 4th Quarter (42 days)
Fri., May 23	Staff - .5 Staff Workshop - No School
Mon., May 26	Memorial Day

**24th Annual Pigskin Classic**  
**Brandon Valley Lynx vs. SF Washington Warriors**  
**Saturday, August 31, 2024**

*Sponsored by the Brandon Valley Athletic Booster Club*  
*ALL PROCEEDS go to our Brandon Valley athletes!*

**Saturday, August 10**

8:00 a.m. Pigskin Classic Golf Tournament

**Friday, August 30**

6:30 p.m.-9:00 p.m. Dodgeball Tournament Grades 1-5 \$60 per team.

7:00 p.m.-8:30 p.m. Middle School Dance BVMS, Grades 7-8. Admission \$5. Concessions available.

**Saturday, August 31**

6:00 a.m.-10:00 a.m. Reserve your stadium seat at the Pigskin Classic. For \$10 – tape down your 6-ft blanket to reserve your game seats. Game admission fee not included.

6:30 a.m.-7:00 a.m. Levo 5K Fun Run or Walk registration at BVHS Football Complex. Start time 7:00am.

7:00 a.m.-1:00 p.m. Brandon Valley Spirit Wear available for purchase.

7:00 a.m.-1:00 p.m. Booster Club Membership Brandon Valley Booster Club will be selling activity passes during the day of Pigskin. Previously purchased passes can also be picked up at the membership table.

8:00 a.m.-1:00 p.m. Pigskin T-shirt Sales

8:00 a.m.-1:00 p.m. Concessions throughout the day.

8:00 a.m.-12:30 p.m. Inflatables, Obstacle Course and Bouncer for kids. \$5 for unlimited use.

9:00 a.m.-2:00 p.m. Bancorp 3 on 3 Basketball Tournament Boys and girls grades 2-8.

9:30 a.m.-11:30 a.m. BV Cheer Camp Grades K-8; 9:30-11:30 a.m.

1:00 p.m.-3:00 p.m. Dodgeball Tournament Grades 6-8 starting at 1:00. \$60 per team

1:00 p.m. Punt, Pass and Kick Register at BVHS Complex. Boys and girls ages 10-14. Free.

5:00 p.m. BV 5<sup>th</sup> and 6<sup>th</sup> Junior Football Exhibition at BVHS Stadium

5:40 p.m. Game ball presentation

6:00 p.m. BV Lynx vs SF Washington Varsity Football at BVHS Stadium



Go to <https://www.bvlynx.org/pigskin> or scan the QR code for the full Pigskin schedule and to register for all your favorite activities!